

# Keeping glass recycling local



British Glass

Do you know what happens to recycling from your Local Authority? Currently, a significant amount of waste glass is exported from the UK to mainland Europe and British Glass is urging local authorities to help reduce this.

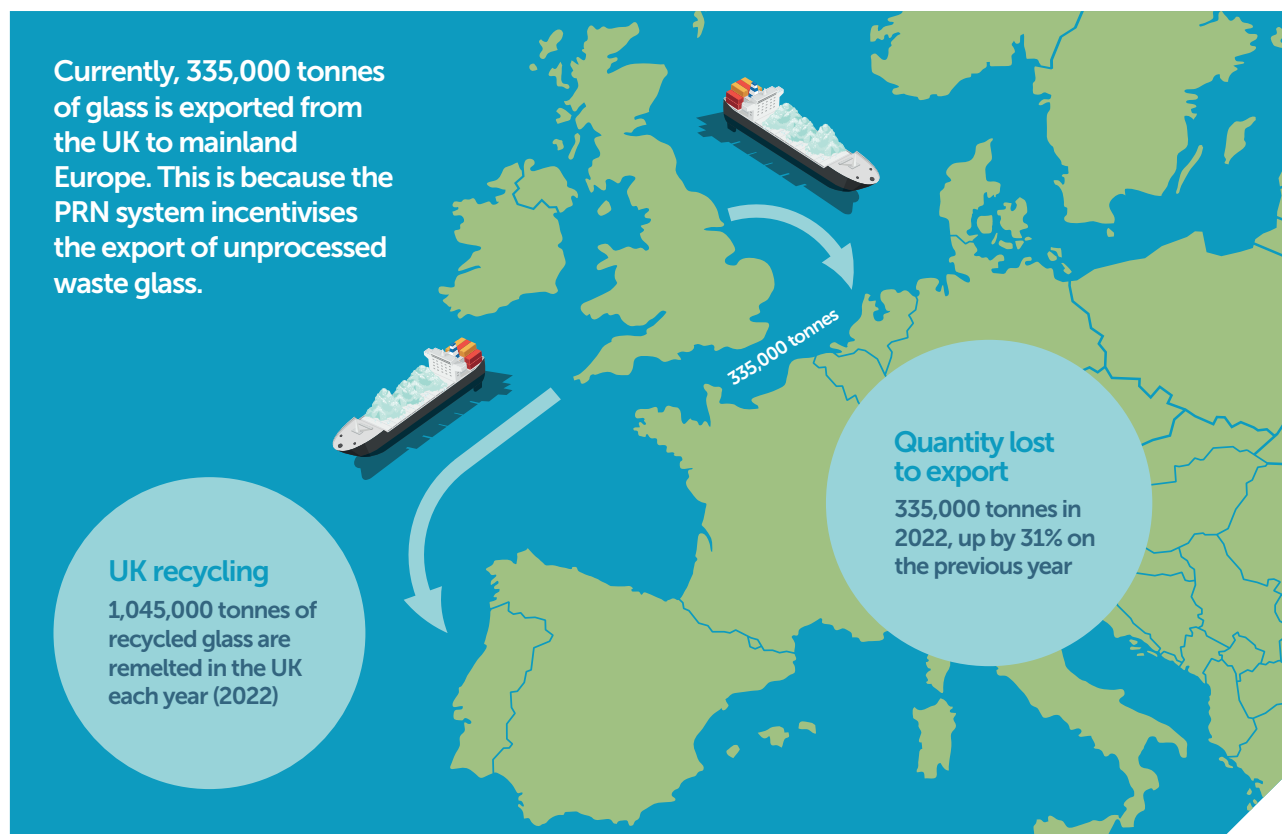
We are calling on local authorities to consider the destination of collected waste glass to support the UK circular economy and industry decarbonisation efforts.

## Glass summary

British Glass is the representative body for the UK glass industry, which contributes around £1.6bn to the UK economy each year. The glass industry provides 24,000 direct jobs and more than 150,000 jobs across the whole supply chain, with a significant portion of these jobs being in the processing of waste glass.

With 8 billion bottles manufactured each year in the UK, it's important to ensure our waste is kept in the UK for recycling.

The export of glass cullet for remelt rose by 79,000 tonnes last year which is a 31% increase compared to 2021. 24% of recycled glass suitable for remelt is now exported; which results in an increase in UK site emissions of 52,000 tonnes of CO<sub>2</sub>, costing the glass sector an additional £8m in energy and carbon cost.

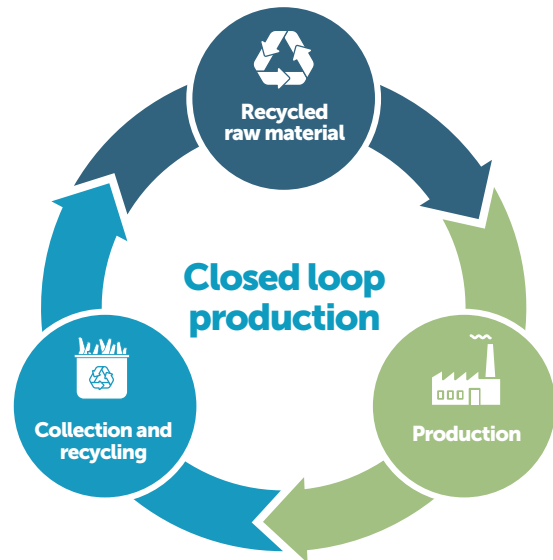


## Closing the Production Loop

Unlike some other packaging materials, glass is 100% recyclable meaning that it can be melted down and remoulded infinitely without ever reducing its quality. This means that glass can be part of a circular economy: a closed loop production that can remain in the UK which provides several benefits:

- decreases the use of non-renewable resources
- reduces carbon emissions
- opens opportunities for local companies to market their participation in circular economy

We ask local authorities to consider the destination of their glass, and to ensure their glass remains in the UK for collection, recycling, and production as this benefits both the environment and the local economy to a greater scale compared to if recyclable glass is exported.



## Reprocessors in the UK

Some local authorities in the UK are exporting glass that could be recycled within the UK. British Glass calls on local authorities to support the UK circular economy and decarbonisation efforts. There are excellent glass processing facilities available across the country. We've compiled a list of reprocessors below who provide this service within the UK:



**w** [beatsonclark.co.uk](http://beatsonclark.co.uk)



**w** [enva.com](http://enva.com)  
**e** [info@enva.com](mailto:info@enva.com)



**w** [glasrecycle.co.uk](http://glasrecycle.co.uk)  
**e** [info@glassrecycle.co.uk](mailto:info@glassrecycle.co.uk)



**w** [recresco.com](http://recresco.com)



**w** [sibelco.com](http://sibelco.com)



**w** [urmgroup.co.uk](http://urmgroup.co.uk)  
**e** [info@urmgroup.co.uk](mailto:info@urmgroup.co.uk)

### Information Source

[www.britglass.org.uk/our-work/recycling](http://www.britglass.org.uk/our-work/recycling)

Find out more about our recycling work at  
**[britglass.org.uk](http://britglass.org.uk)**  
or contact [info@britglass.co.uk](mailto:info@britglass.co.uk)